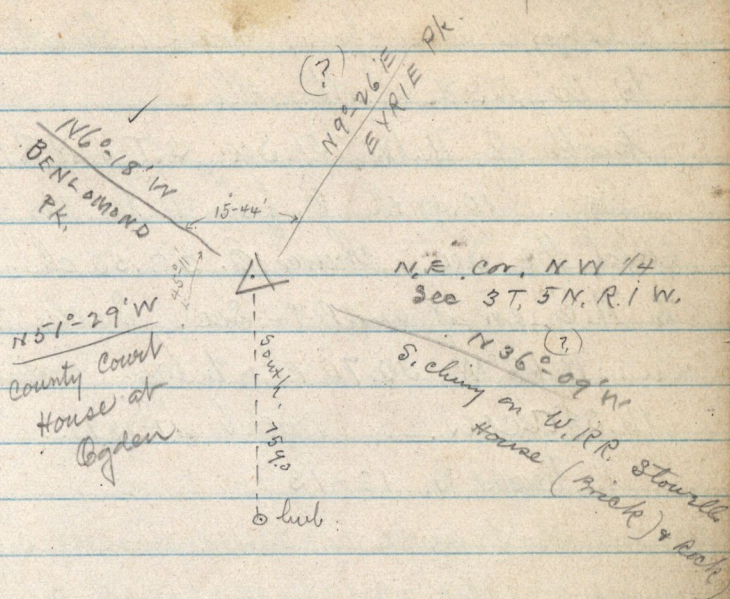


April 3-1885



Mag. Variation N 16-40 E

From this corner in running west line
 we bear South 75 from the N.W. cor of
 said 1/4 Sec being 40.40 chains west from
 this corner. (= 588-56 W.) see page 19

Copy deed from John D. Moran Sen. to John Wilson - March 1-1878-

Recorded - L - 309 - Part of N. W. 1/4 Sec 3 - T. 5 N. R. 1 W. - Beg. 8.75 ch S. N. W. cor. 1/4
 S. 5.10 ch, N 52 1/4 E, 6.10 ch, S 24 E 2.90 ch, E 10.12 ch, N. 10.30 ch, N 14.5
 S 24 E 6.75 ch S 52 1/4 W to beg. 14.65 a